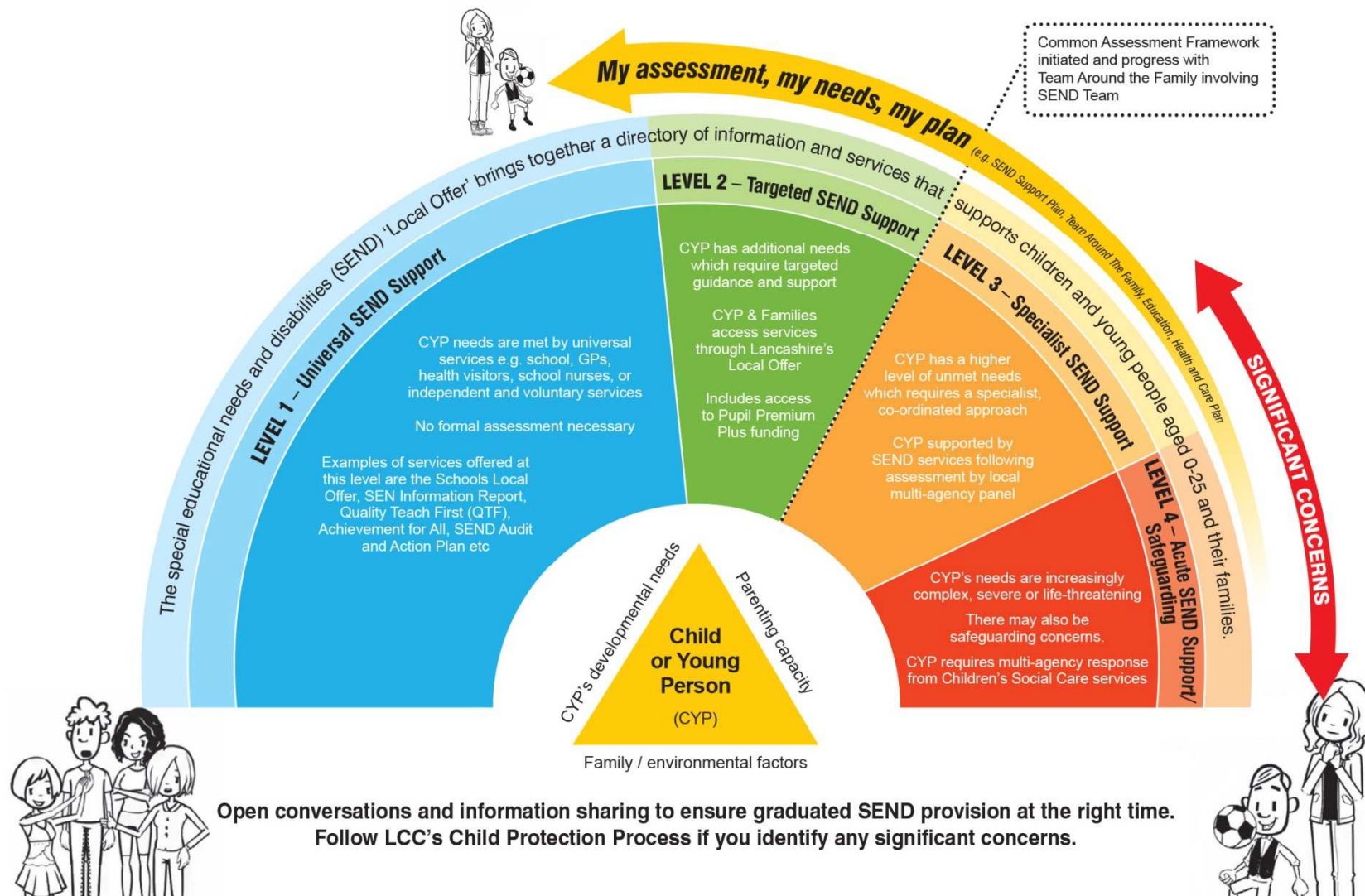


School Nursing



Lancashire SEND Graduated Response



School Nursing Service

- The School Nurse service is available for any child, young person and their family aged 4 - 19 years.
- School Nurses work in collaboration with schools, GP's youth services and many other community services to support the needs of children, young people and their families
- Every school has a named School Nurse .You can ask the School Nurse anything: if they can't help you they will try and find someone who can. The School Nurse can also listen to you if you are worried about being hurt by someone you know or who lives with you.
- **What we do?**
- We work in Close Partnership with other organisations as well as Health and Education such as Children's and Young Peoples Services, Private and Voluntary Organisations.
- We undertake Health Assessments for Looked After Children and referrals as appropriate.
- We offer support, advice and guidance to other professionals and parents on a variety of topics to do with health and wellbeing.
- We have a key role in Safeguarding vulnerable children and young people including children and young people who have special needs and who have been excluded from mainstream education.
- We offer training to staff and parents on how to manage specific health needs in school.
- We offer first level support in Child and Adolescent Mental Health issues and refer on as necessary.
- We have a key role in Public Health and contribute to the local and national programmes such as supporting smoking cessation, tackling obesity, reducing teenage pregnancies, delivering immunisation programmes and much more...

Service	Areas covered	Age
Special Needs School Nursing (external link) Lancashire Care NHS Foundation Trust	<ul style="list-style-type: none"> •West Lancashire •Chorley, South Ribble and Preston •Burnley, Pendle, Rossendale, Hyndburn and Ribble Valley 	2-19
Special School Nursing Service (external link) Blackpool Teaching Hospitals NHS Foundation Trust	<ul style="list-style-type: none"> •Fylde and Wyre •Lancaster and North Lancashire 	2-19
School Nursing Service (external link) Lancashire Care NHS Foundation Trust - Universal Services	<ul style="list-style-type: none"> •West Lancashire •Chorley, South Ribble and Preston •Burnley, Pendle, Rossendale, Hyndburn and Ribble Valley 	School aged children and young people



Department
for Education

Supporting pupils at school with medical conditions

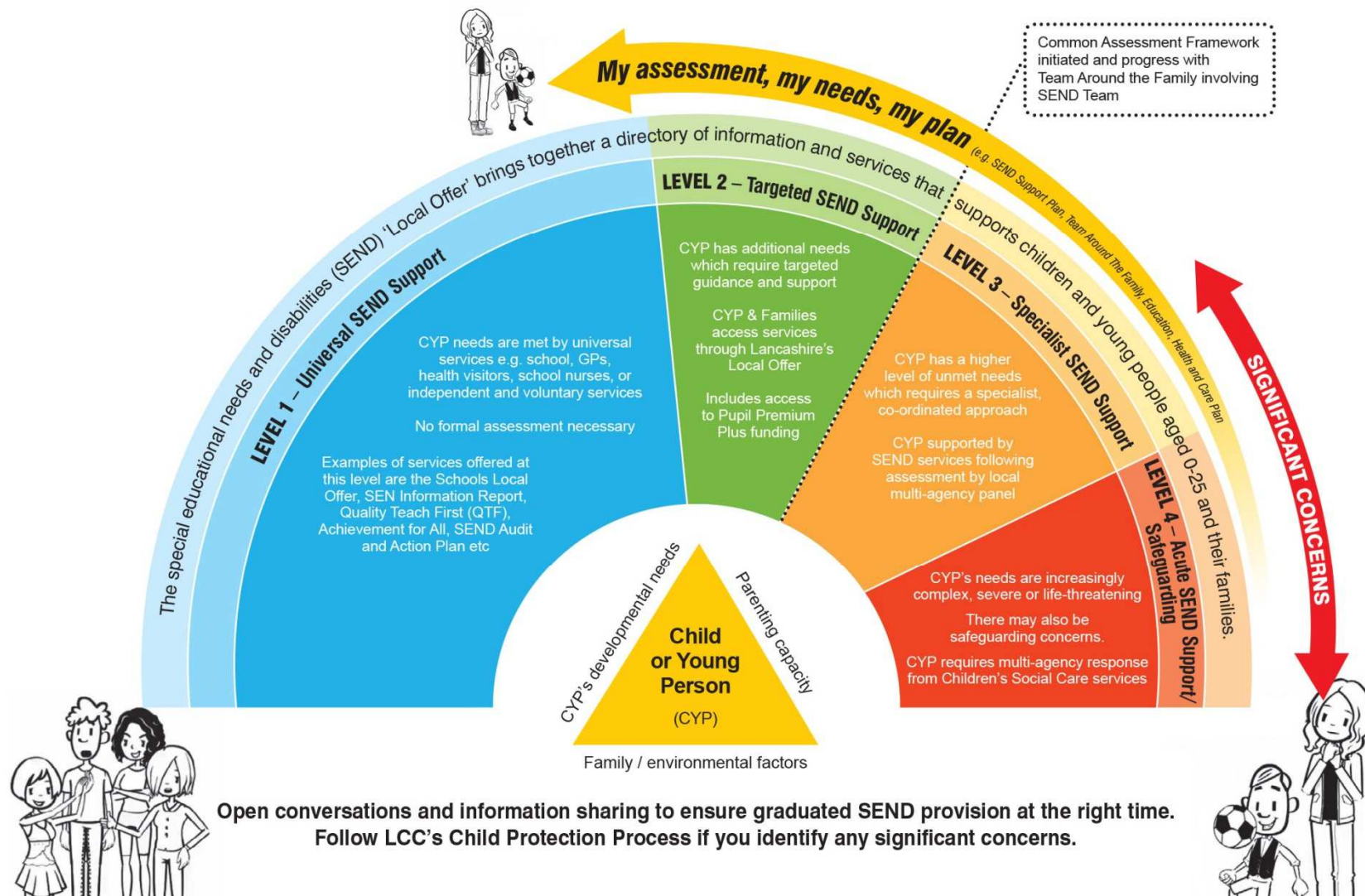
Statutory guidance for governing bodies of maintained schools and proprietors of academies in England

December 2015

- Pupils at school with medical conditions should be properly supported so that they have full access to education, including school trips and physical education.
- Governing bodies must ensure that arrangements are in place in schools to support pupils at school with medical conditions.
- Governing bodies should ensure that school leaders consult health and social care professionals, pupils and parents to ensure that the needs of children with medical conditions are properly understood and effectively supported.

- Birth
- Early Years
- Primary School
- Secondary School
- Specialist School
- Post 16 School / College
- Supported Internship / Apprentice
- Independent Specialist College (Post 19)

Lancashire SEND Graduated Response



Questions ?